

Discovering Inclusion

Level 2

*Beyond
Awareness*



What is The Advocacy Network on Disabilities?

MISSION:

"The Advocacy Network on Disabilities champions the rights of individuals with intellectual, developmental, and other disabilities by promoting inclusion, providing services, and advancing systems change."

Our Services

FAMILY SUPPORT: Experienced, family-friendly staff help people with disabilities and their families identify and access services.

ALL CHILDREN TOGETHER (ACT): An initiative of The Children's Trust, project staff work with the organizations it funds to increase their capacity to provide quality, inclusive programs.

SYSTEMS ADVOCACY: Seeking change that can help many people at once, staff works to change policies, rules or laws that determine how services are provided.

To successfully complete this training and receive a certificate, you must answer a minimum of 8 out of 10 questions correctly on the Learning Assessment at the end of today's session.

To receive your certificate, please visit:
<http://collabornation.net/login/advocacynetwork>

We welcome you to ask as many questions as you want, and to fully participate in today's activities.

Housekeeping & Logistics

- Restroom
- Breaks
- Handouts
- Questions?



At the end of this workshop you will be able to...

- Identify 3 reasons why students have trouble learning and following routines.
- Identify 2 factors to consider when children display learning challenges.
- List 3 non- negotiable “Toolbox Strategies” appropriate for all students



Today's Agenda

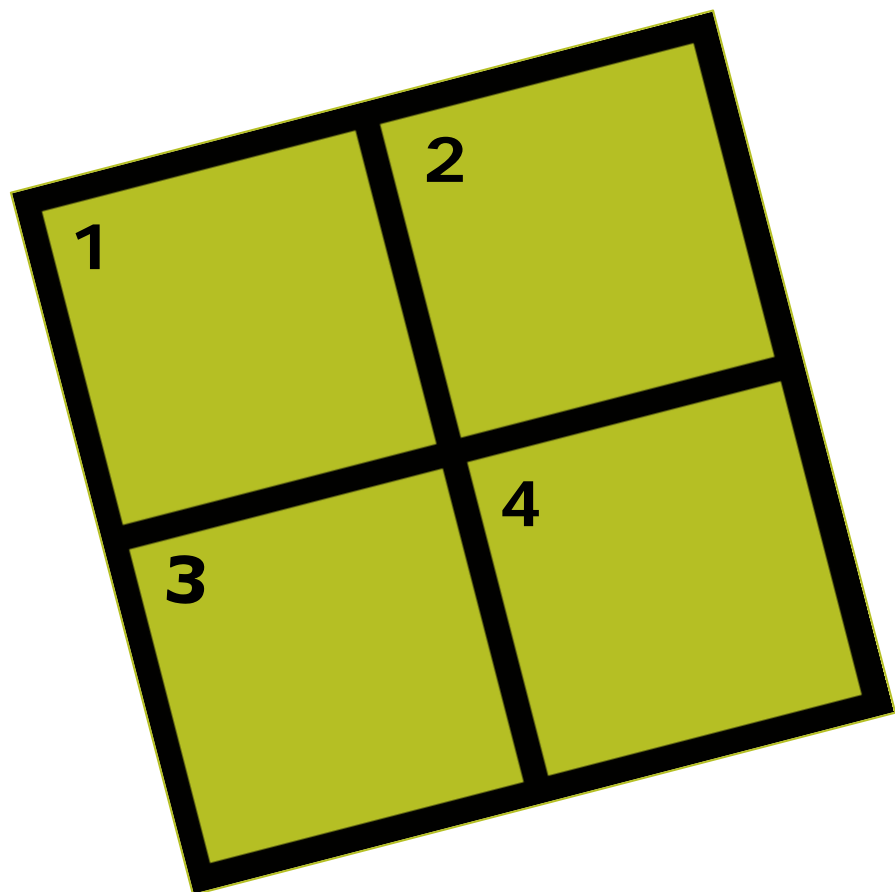
- **DI Level 1 Review**
- **Specific Disabilities**
- **Strategies For Support**
- **Assessment**





Group Activity

Each group:



1. Where were you born?
2. What is your favorite activity?
3. Who is your role model?
4. How many total years of experience does your group have in working with children?

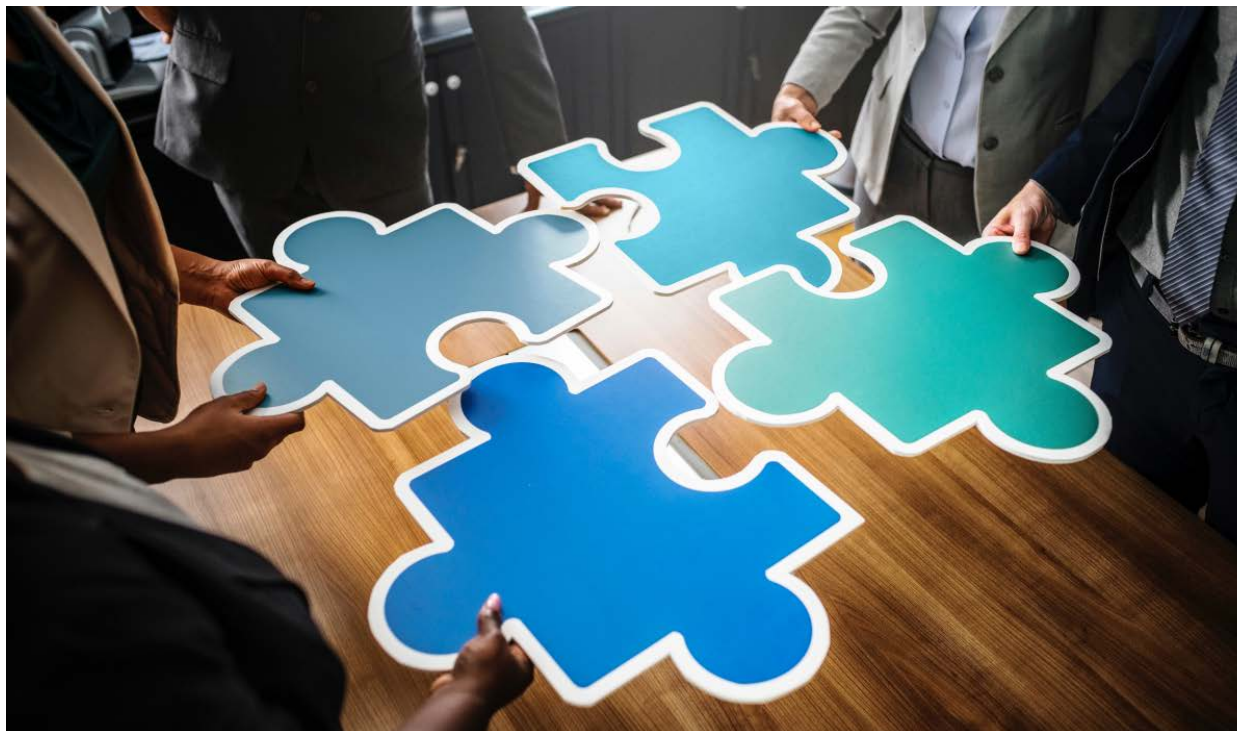


Discovering Inclusion 1 Activity

LET'S READ AND SHARE SOME FACTS ABOUT SPECIFIC DISABILITIES



DEAL 'EM!





Remember...
**No two students with
the same disability
are the same.**

BREAK TIME



Why do some young people have trouble learning or following routines?



Difficulty with motor requirements of the task



The task or directions are too complex in the present form



**They do not know
whether or not to
perform the task**



There is insufficient or the wrong type of reinforcement



There is insufficient practice



Factors to consider when children/youth display learning challenges



Student Abilities and Comprehension

- **Motor abilities**
- **Processing abilities**
- **Reading Level**



Emotional/Behavioral

- **Peer relations**
- **Adult relations**
- **Social/Emotional Needs**



Attention and Organization

- Independence
- Time on Task
- Impulsivity
- Ability to sort and compartmentalize



Learning Characteristics

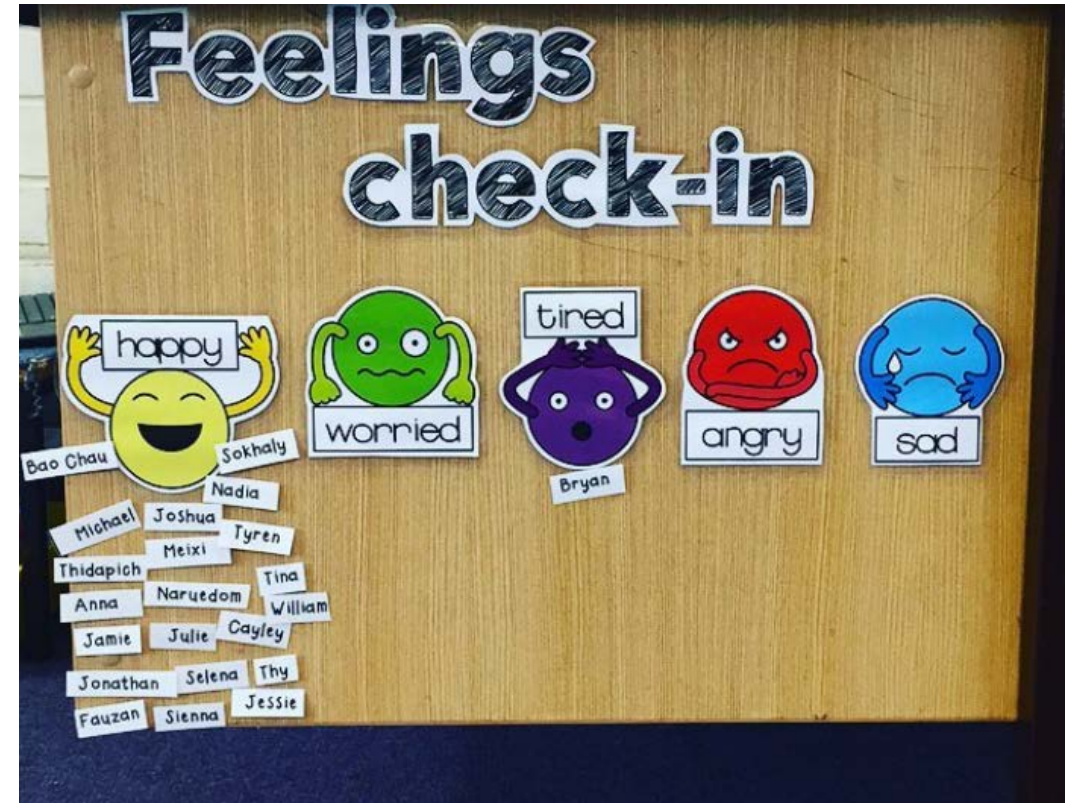
- **Learning styles**
- **Problem solving skills**
- **Student-owned strategies**



History

What has or hasn't worked in the past?

Classroom Intervention Log					
Student	Targeted Goal(s)	Intervention	Date Implemented	Successful (Y or N)	Observation or Notes



Toolbox of Strategies



NON-NEGOTIABLES

- Consistent
- Structured
- Repetitive
- Visual
- PRACTICED

Strategy Preview

Let's take a look at some strategies that you will be using in the next activity

What Would You Do?



**“If you only have one tool and it’s a hammer,
Then all the problems look like a nail.
You need a full toolbox.”**





In conclusion, you should now be able to...

- Identify 3 reasons why students have trouble learning and following routines.
- Identify 2 factors to consider when children display learning challenges.
- List 3 non- negotiable “Toolbox Strategies” appropriate for all students



Assessment & Evaluation



THANK YOU!



Follow us @AdvocacyMiami!